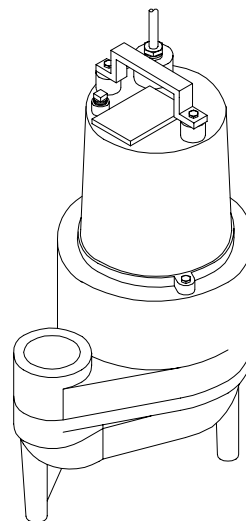


Submersible Non-Clog Pumps

DISCHARGE	2" NPT, Female, Vertical
LIQUID TEMPERATURE	77°F (25°C) Continuous
MOTOR HOUSING	Cast Iron
PUMP BODY	Cast Iron
IMPELLER: Design	Multi-Vane, Vortex
Material	Cast Iron
SHAFT	416 Stainless Steel
O-RINGS	Buna-N
HARDWARE	300 Series Stainless Steel
PAINT	Air Dry Enamel
CORD ENTRY	20 ft. (6m) Quick Disconnect Cord with plug on 115 Volt, Pressure Grommet for sealing and strain relief
SEAL: Design	Single Mechanical, Oil Filled Reservoir
Material	Carbon/Ceramic/Buna-N
	Hardware - 300 Series Stainless
UPPER BEARING	Single Row, Ball, Oil Lubricated
LOWER BEARING	Single Row, Ball, Oil Lubricated
MOTOR: Design	Oil Filled
Insulation	Class B
SINGLE PHASE	Permanent Split Capacitor (PSC) Includes Overload Protection in Motor
LEVEL CONTROL:	
SEV412	None
SEV412A	Wide Angle, Mechanical, 20 ft (6m) cord Pipe Mounted
SEV412VF	Vertical Float, PVC, Snap Action
SEV412VFT	Attached Vertical Float, PVC, Snap Action
SEV412AT	Wide Angle, Mechanical, 20 ft (6m) cord Pump Mounted
SEV412DT	Diaphragm Switch, Press Operated, snap Action, Normally Open, 20ft. (6m) Cord



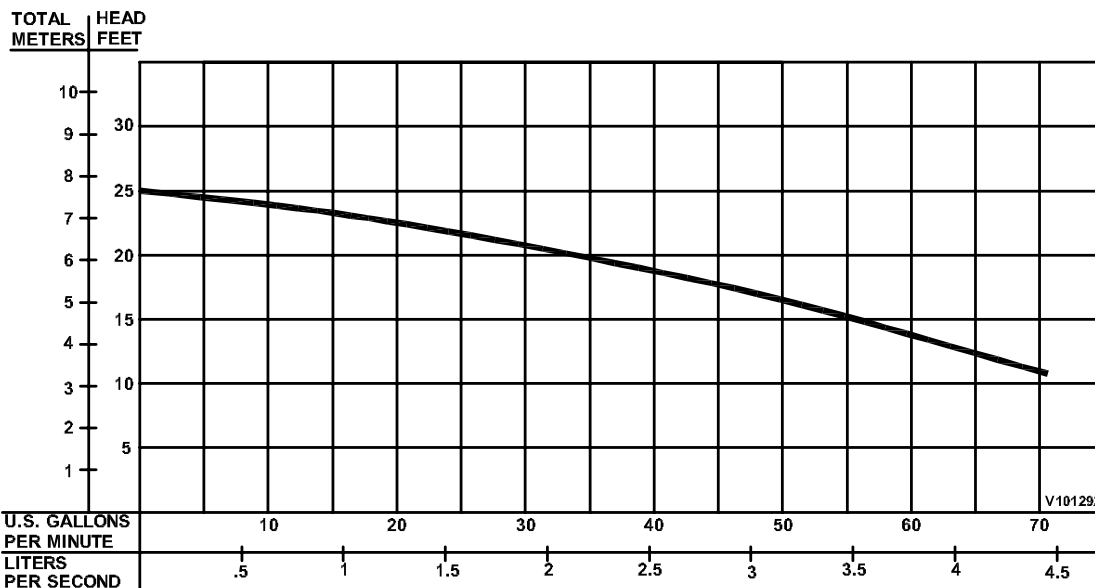
Series: SEV
0.5 HP, 3450RPM, 60Hz



CSA 108 - File No. LR16567
UL 778

NRTLIC

DESCRIPTION:
SUBMERSIBLE NON-CLOG SEWAGE PUMP DESIGNED
FOR TYPICAL RAW SEWAGE APPLICATIONS



Testing is performed with
water specific gravity of 1.0
@ 68°F (20°C), other fluids
may vary performance

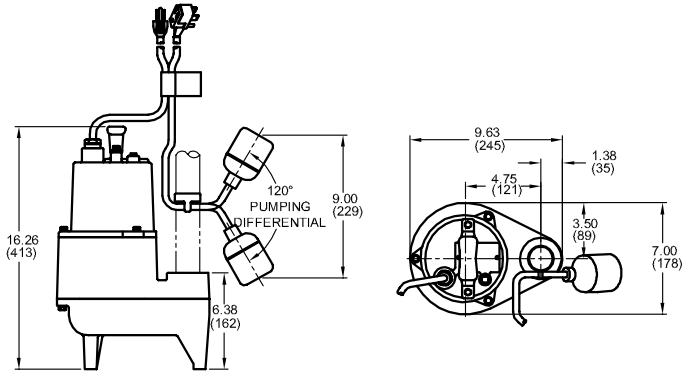
Series SEV

2" Spherical Solids Handling
Manual & Automatic

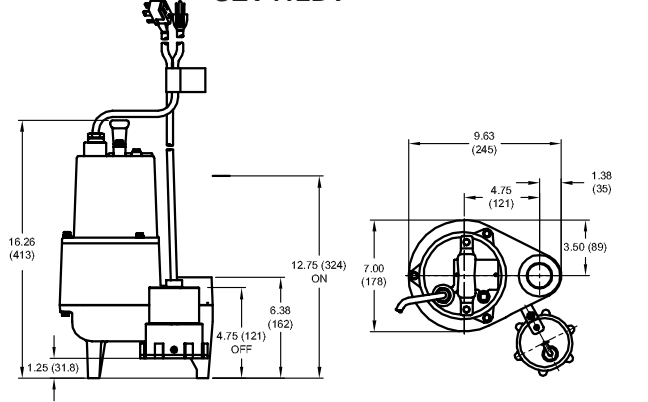
BARNES®
Professional Plumbing
www.cranepumps.com

Submersible Non-Clog Pumps

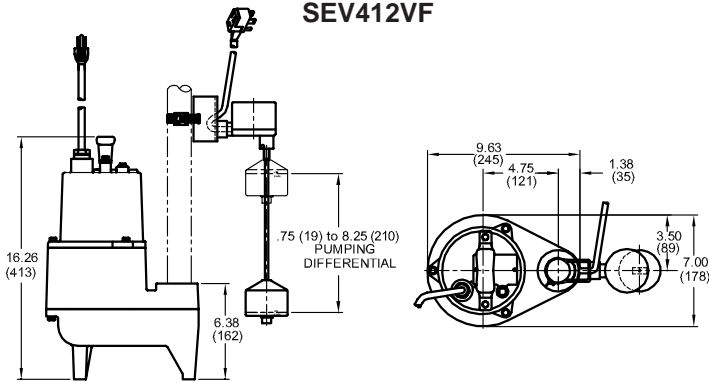
SEV412A
SEV412 (Less Float)
SEV412AT (Attached to Motor Housing)



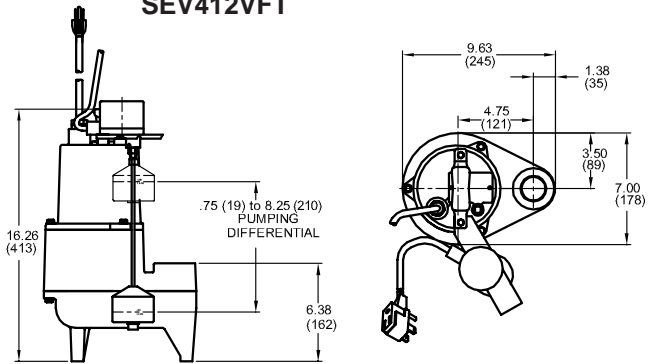
SEV412DT



SEV412VF



SEV412VFT



MODEL NO	PART NO	HP	VOLT/PH	Hz	RPM (Nom)	NEMA START CODE	FULL LOAD AMPS	CORD LENGTH	CORD SIZE	CORD TYPE
SEV412	101292	0.5	115/1	60	3450	H	10.50	20 ft. (6m)	14/3	SJTOW
SEV412A	101293	0.5	115/1	60	3450	H	10.50	20 ft. (6m)	14/3	SJTOW
SEV412VF	101294	0.5	115/1	60	3450	H	10.50	20 ft. (6m)	14/3	SJTOW
SEV412AT	103544	0.5	115/1	60	3450	H	10.50	20 ft. (6m)	14/3	SJTOW
SEV412VFT	110404	0.5	115/1	60	3450	H	10.50	20 ft. (6m)	14/3	SJTOW
SEV412DT	119614	0.5	115/1	60	3450	H	10.50	20 ft. (6m)	14/3	SJTOW

IMPORTANT !

- 1.) PUMP MAY BE OPERATED "DRY" FOR EXTENDED PERIODS WITHOUT DAMAGE TO MOTOR AND/OR SEALS.
- 2.) THIS PUMP IS APPROPRIATE FOR THOSE APPLICATIONS SPECIFIED AS CLASS I DIVISION II HAZARDOUS LOCATIONS.
- 3.) THIS PUMP IS NOT APPROPRIATE FOR THOSE APPLICATIONS SPECIFIED AS CLASS I DIVISION I HAZARDOUS LOCATIONS.
- 4.) INSTALLATIONS SUCH AS DECORATIVE FOUNTAINS OR WATER FEATURES PROVIDED FOR VISUAL ENJOYMENT MUST BE INSTALLED IN ACCORDANCE WITH THE NATIONAL ELECTRIC CODE ANSI/NFPA 70 AND/OR THE AUTHORITY HAVING JURISDICTION. THIS PUMP IS NOT INTENDED FOR USE IN SWIMMING POOLS, RECREATIONAL WATER PARKS, OR INSTALLATIONS IN WHICH HUMAN CONTACT WITH PUMPED MEDIA IS A COMMON OCCURRENCE.

SECTION C
PAGE 6
DATE 10/05

CRANE®

A Crane Co. Company

PUMPS & SYSTEMS

USA: (937) 778-8947 • Canada: (905) 457-6223 • International: (937) 615-3598