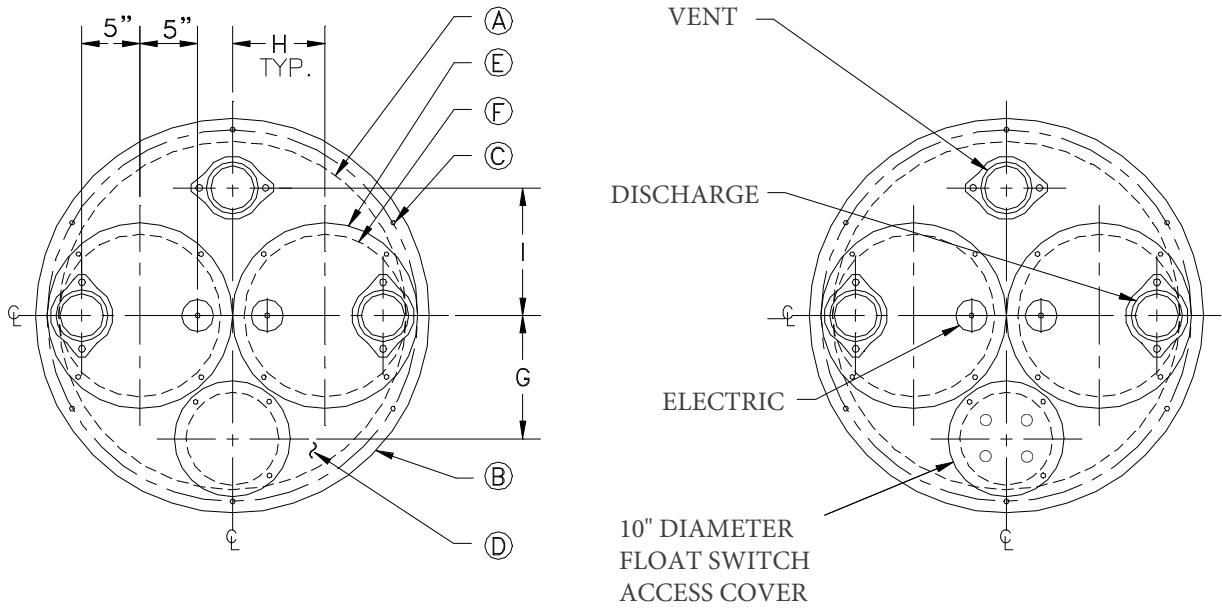


# DUPLEX COVER - 3/8" THICK PVC



22

PART NO.	(A) BASIN INSIDE DIM.	(B) OUTSIDE DIM.	(C) BOLT CIRCLE	(D) THICKNESS	(E) ACCESS PLATE DIM.	(F) CLEAR ACCESS DIM.	(G) DISTANCE	(H) DISTANCE	(I) DISTANCE
C30DSA4-PVC	30	34	32.5	.375	16	14	10.5	8	11

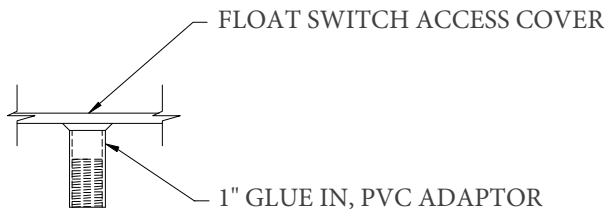
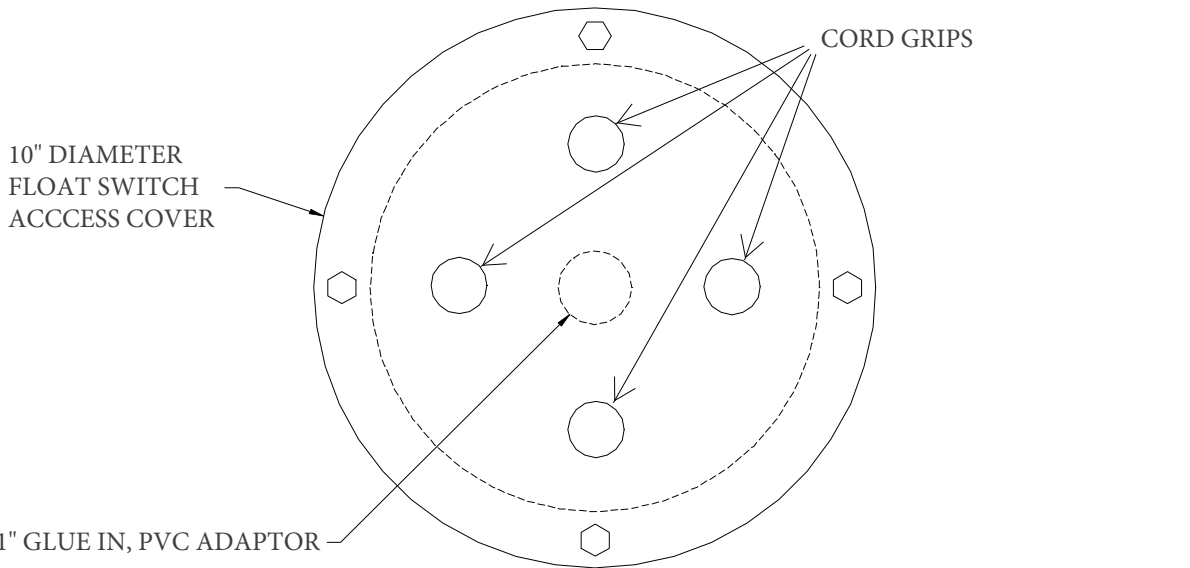
ALL DIMENSIONS IN INCHES

\* Stainless Steel Hardware & Gasket Tape For Gas Tight Seal Provided

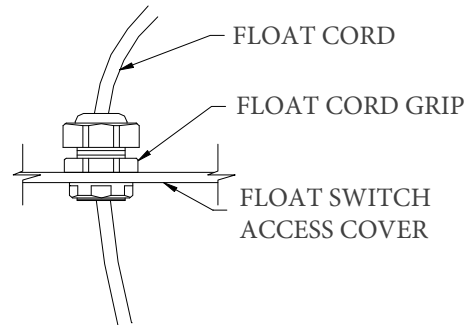
**TOPP**  
INDUSTRIES  
INCORPORATED

Reference: -	Scale: None Drawn By: RM App'd By: . Date: 07/08/03	This print is and contains confidential proprietary information owned exclusively by TOPP INDUSTRIES, INC. It is furnished on a strictly confidential basis. This restriction includes, but is not limited to the condition that this print will not only be used as a record or to identify or inspect parts or for other information purposes and will not be used to manufacture or procure the manufacture of the items shown in this print by any other source than TOPP INDUSTRIES, INC.
Highway 25 North P.O. Box 420 Rochester, IN 46975 Phone: 800/354-4534 Fax: 574/223-8106	Supersedes Prints Prior To: 07/08/03	Reference No:

# FLOAT SWITCH ACCESS COVER - 3/8" THICK PVC



\* GLUE IN, PVC ADAPTOR DETAIL



\* FLOAT CORD GRIP DETAIL

\* Stainless Steel Hardware & Gasket Tape For Gas Tight Seal Provided

Model IN04-PVC-38



FLOAT CONTROL PLATE Reference: -		Scale: None Drawn By: RM App'd By: . Date: 07/08/03	<small>This print is and contains confidential proprietary information owned exclusively by TOPP INDUSTRIES, INC. It is furnished on a strictly confidential basis. This restriction includes, but is not limited to the condition that this print will not only be used as a record or to identify or inspect parts or for other information purposes and will not be used to manufacture or procure the manufacture of the items shown in this print by any other source than TOPP INDUSTRIES, INC.</small>
Highway 25 North P.O. Box 420 Rochester, IN 46975 Phone: 800/354-4534 Fax: 574/223-6106		Supersedes Prints Prior To: 07/08/03	

